



Genset

Model	JHW5-132GF
Voltage	400/230V
Frequency&Speed	50HZ 1500RPM
Prime Power	122kW/152kVA
Standby Power	133kW/167kVA

- **Engine: Weichai WP4.6ND148E310**
- **Alternator: Stamford/Leroy Somer /Hengsheng**
- **Controller: DeepSea/SmartGen /DEIF/ComAp**

General Engine Data

转速 Speed r/min	发动机功率 Gross Engine Output		
	持续功率 kW COP kW	常用功率 kW PRP kW	备用功率 kW ESP kW
1500	/	135	148

发动机类型 Engine Type 柴油机 Diesel Engine
 气缸/气门数量 N° of Cylinders / Valves 4 / 16
 气缸分布型式 Cylinders arrangement..... L 型 L-Type
 缸径×行程 (mm) Bore x Stroke (mm) 108×125
 排量(L) Displacement(L) 4.58
 燃油系统型式 Fuel System .. 电控高压共轨 Electronically controlled high pressure common rail
 进气形式 Aspiration 增压中冷 Turbocharging and intercooling
 压缩比 Compression ratio 17.5
 飞轮壳尺寸 Flywheel housing SAE3
 飞轮尺寸 Flywheel 11.5"
 飞轮齿圈齿数 N° of teeth on flywheel ring gear 128
 飞轮转动惯量 (kg/m²) Inertia of flywheel (kg/m²)..... 0.655
 曲轴转动惯量 (kg/m²) Inertia of crankshaft (kg/m²)..... 1.042
 排放阶段 Emission standard 中国非道路三阶段 Non-road China III
 发动机尺寸(长×宽×高) Overall Dimensions without radiator (L x W x H) (mm)
 961×661×979 (以外形图为准 The outer chart shall prevail)
 发动机干重 (kg) Engine dry weight (kg) 480
 不带辅助启动装置时最低冷启动温度 (°C) Min.cold start temperature without auxiliary starting
 device(°C) -15
 带辅助启动装置时最低冷启动温度 (°C) Min. cold start temperature with auxiliary starting device (°C)
 -30
 包装尺寸(长×宽×高) Packing size (L x W x H) (mm) 1300×900×1175
 运输重量 Packaging quality(kg)..... 650

发动机允许的最高使用环境温度 (°C) System designed for ambient temperature up to (°C)	45
进出水外部管路的最小内径 (mm) Min. inside diameter of coolant outlet pipe (mm)	45
出水管报警温度 (°C) Coolant alarm temperature (°C).....	108.0
节温器初开/全开温度 (°C) Thermostat opening temperature/full open temperature (°C)	76/89(高温循环 High temperature cycle)
冷却系统内最小保持压力 (kPa) Min. pressure in cooling system (kPa).....	15
发动机本身冷却液容量 (L) Coolant capacity of the engine (L)	7.12(高温循环 High temperature cycle)
油底壳机油最小/最大容量 (L) Oil capacity Low / High (L).....	8.52/16.69
怠速时机油压力 (kPa) Oil pressure in normal condition idle speed (kPa).....	100-250
在额定转速下的机油压力 (kPa) Oil pressure in normal condition at rated speed	350-550
机油压力低报警值(kPa) Lowest oil pressure alarm value (kPa)	60
机油压力低停机值(kPa) Lowest oil pressure shutdown value (kPa)...../	
额定工况主油道内机油温度范围 The oil temperature range of the main oil passage under rated working condition (°C)	85 ~ 115
机油流量 (L/min) Oil flow (L/min)	70
额定工况机油燃油消耗比 Oil fuel consumption ratio based on engine fuel consumption data under rated working condition	≤0.1%
喷油泵进油口最大进油阻力 (kPa) Max. restriction at fuel pump inlet (kPa)	65
喷油泵最大回油阻力 (kPa) Max. fuel return restriction (kPa)	50
燃油最高进油温度 (°C) Max. fuel inlet temperature (°C).....	70.0
供油流量 (L/h) Fuel supply flow (kg/h)	/
输油泵最小压力 (kPa) Min. pressure of fuel pump (kPa).....	35
燃油进油管最小直径 (mm) Min. diameter of inlet pipe (mm).....	8
燃油回油管最小直径 (mm) Min. diameter of return pipe (mm)	8

Alternator

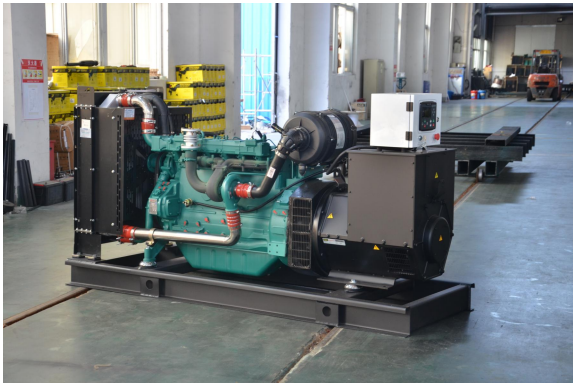
Pole No.	4-Pole	
Exciter Type	Single bearing, Brushless, Self-excited	✧ NEMAMG1.JIANGHAO,and ANSI standards compliance for temperature rise and motor starting.
Power factor	0.8	✧ Sustained short-circuit current of up to 300% of the rated current for up to 10 seconds.
Voltage adjust range	≅ 5%	✧ Sustained short-circuit current enabling down stream circuit breakers to trip without collapsing the generator field.
Insulation Grade	H	✧ Self-ventilated and dripproof construction.
Protection Grade	IP23/22	
Phase / wire	3 phase 4 wires	
✧ Superior voltage waveform from two-thirds Pitch windings and skewed stator.		
✧ Digital solid-state.volts-per-hertz voltage Regulator with +1% no-load to full-load regulation.		

Control Panel



The control module gives digital readouts of:

Generator voltage;
Output frequency;
Engine speed;
Battery voltage;
Engine hours run.



Dimension:2400*930*1550mm

Weight:1480kg



Dimension:3300*1300*1800mm

Weight:2530kg

Fuel Tank:360L

The **control panel** is an Digital Control Module suitable for a wide variety of single, diesel or gas, gen-set applications.

Monitoring an extensive number of engine parameters, the module will display warnings, shutdown and engine status information on the back-lit LCD screen and illuminated LEDs.

The control module has indicators for failure information:

Over speed/Low speed,
Emergency stop
Low oil pressure;
High water temperature
Failure to start
Battery charger failure

Automatic shutdown occurs under:

Low engine oil pressure;
High engine water temperature;
Over speed/Low speed;
Failure to start after three attempts.

Electrical system

- Maintenance-free and anti-explosion battery
- Standard breaker
- ABB breaker (optional)
- ATS (optional)
- Battery charger (optional)
- GMS monitoring (optional)

Packing

- Wrapping film packaging
- Tray packaging
- plywood box packaging

Jiangsu Jianghao Generator Co.,Ltd

Address: No.1 Xixu Road, Medical High-tech Zone,
Taizhou city, Jiangsu, China

Contact Person: Anthony Feng

Email: jhfsale@jhgenerator.com

WhatsApp: +86 18652649673

